

IMPORTANT! **PLEASE READ BEFORE YOU START**


These easy instructions are intended to guide you through the replacement process.

- ✓ To avoid electric shock, please make sure product is turned off and AC Adaptor is disconnected from the power source. Remove jewelry before you begin work to avoid scratching the surface of your notebook computer.*
- ✓ Place your notebook computer on a clean, stable and covered surface to avoid damage to the computer's case.*
- ✓ Follow the ESD (Electrostatic Discharge) damage prevention instructions:
 - Hold parts by the edges, away from exposed circuitry when possible.
 - Do not walk around excessively as this promotes static build-up.
- ✓ The appearance of the electronic components shown in the illustrations may be different from the components shipped. This slight difference does not affect the accuracy of these instructions.

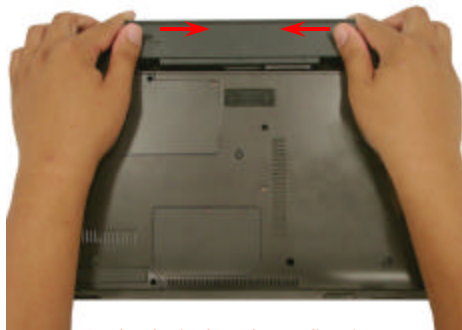
* Sony is not responsible for any loss of data associated with your computer or any damage caused by incorrect handling of the computer under these procedures. The terms of your Sony limited warranty continue to apply.



Step 1. Prepare the Computer.

 **CAUTION:** Make sure the computer is turned off, the lid is closed, and the AC Adapter is disconnected. Failure to do so can result in damage to the computer.

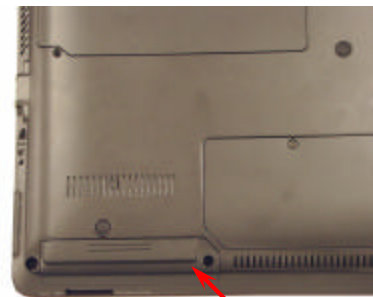
Place the computer upside down on a protected surface with the front edge facing you.



Push tabs in the release direction

Step 2. Remove the Battery Pack.

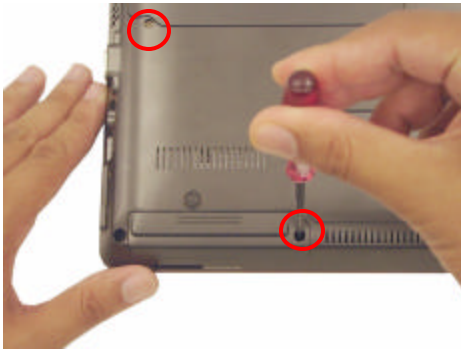
Locate the two tabs as shown in the picture. One is on the left end of the battery pack, and the other is located on the right side. Using your thumbs and fingers push both tabs in the release direction; gently push the battery pack away from you.



HDD Bay

Step 3. Locate HDD Bay.

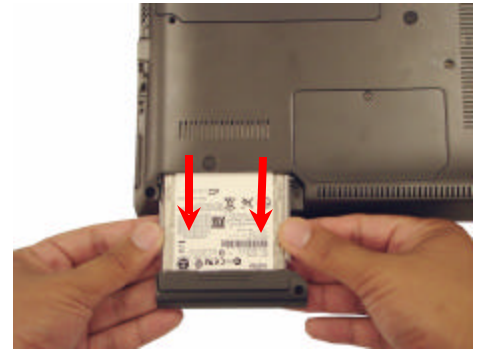
Rotate the computer clockwise with the Hard Disk Drive (HDD) bay facing you as shown in the picture.



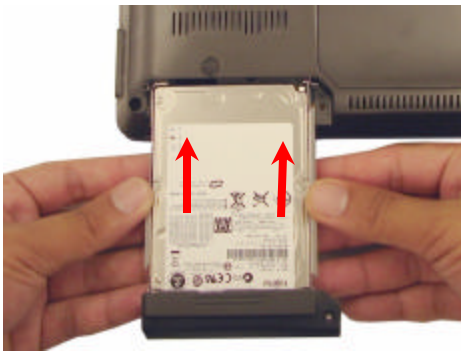
Step 4. Using the enclosed magnetic screwdriver, loosen the two (2) screws securing the hard disk drive access door.



Step 5. To initiate the removal of the HDD, pull slightly the HDD front cover as shown in the picture.



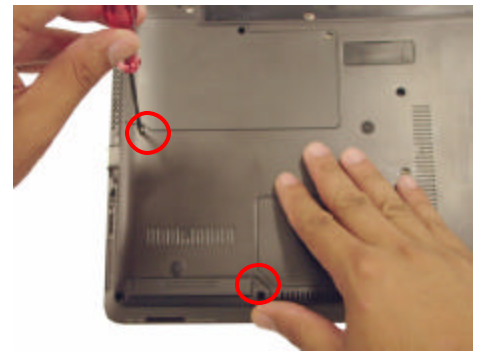
Step 6. With even force slide out the HDD as shown. Some force may be needed to unlock the HDD from the connector.



Step 7. Hold the new HDD by the edges and align it on the opening. With an even force, slide in the new HDD.



Step 8. Make sure the new HDD is seated flush on the edge of the computer.



Step 9. Reinstall the two (2) previously removed screws.

Step 10. Reinstall the Battery Pack and reconnect the AC Adapter.

Power on your computer and continue with the recovery process by following instructions described on the back of the recovery disk's case.

Return the old HDD to Sony following the included shipping instructions.